

Advantages Fristam Shear Pumps and Powder Mixers



Fristam thinks that it doesn't make sense to try to combine a homogenizer unit and a pump. According to our experience you can either mix nicely or pump properly. The power to pump will be taken away from the mixing quality, so our competitors can't mix as good as we can.

Use of the same parts as in the standard pumps



Fristam Shearpump FSPE 742



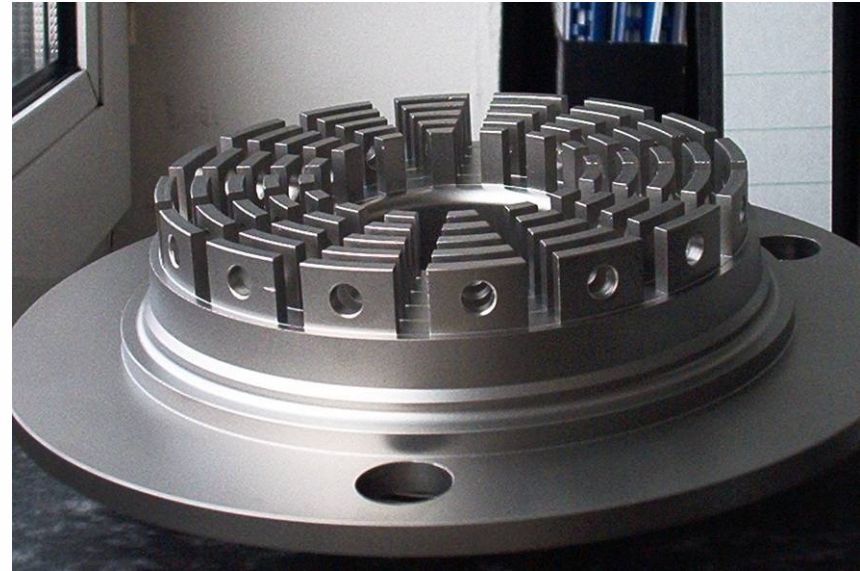
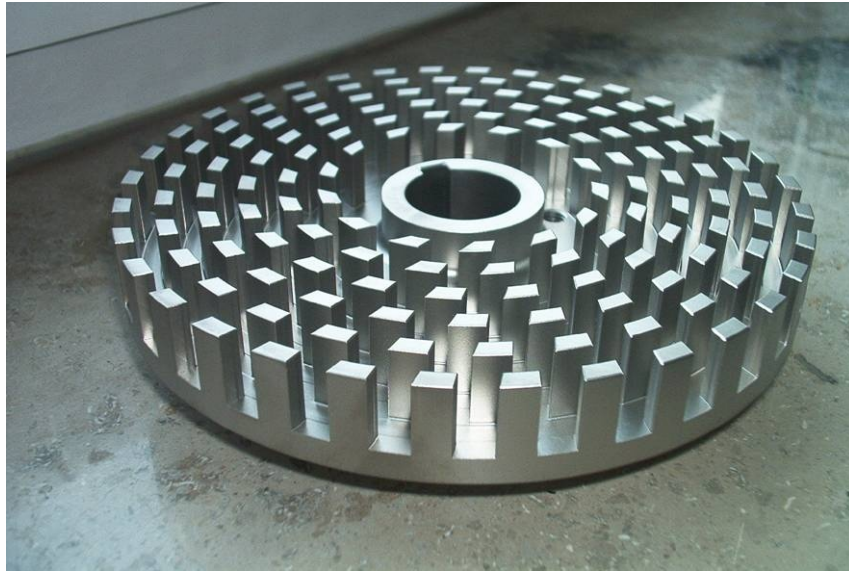
Fristam Pump FPE 742

...and therefore flexibility of
interchanging impellers/covers
to use it also as a standard
pump.

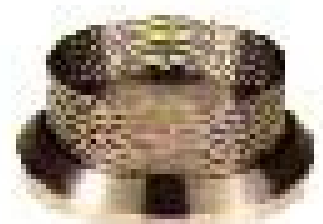
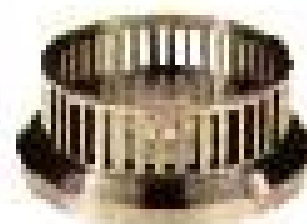
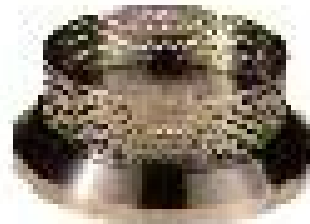
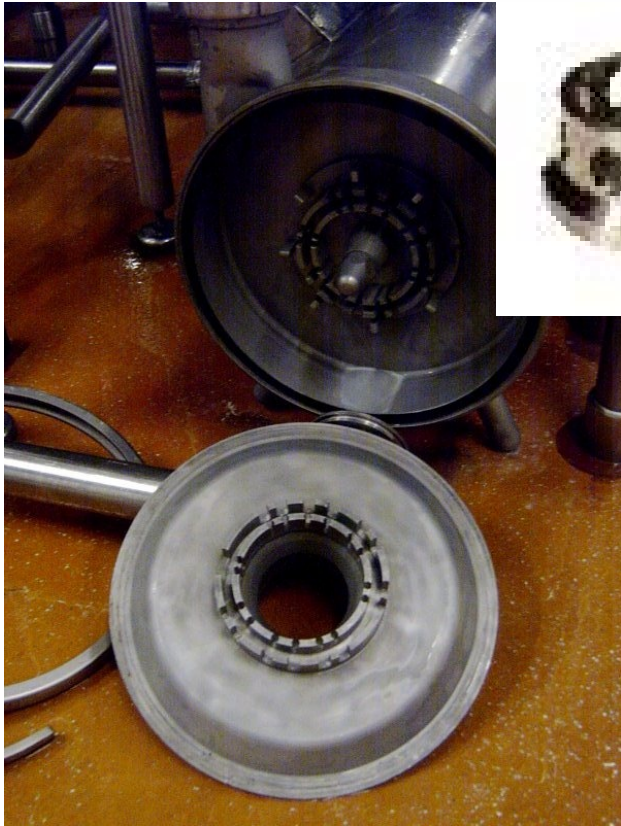
Fristam knows the products and
can offer special designs
accordingly:



More options on rotor/stator:

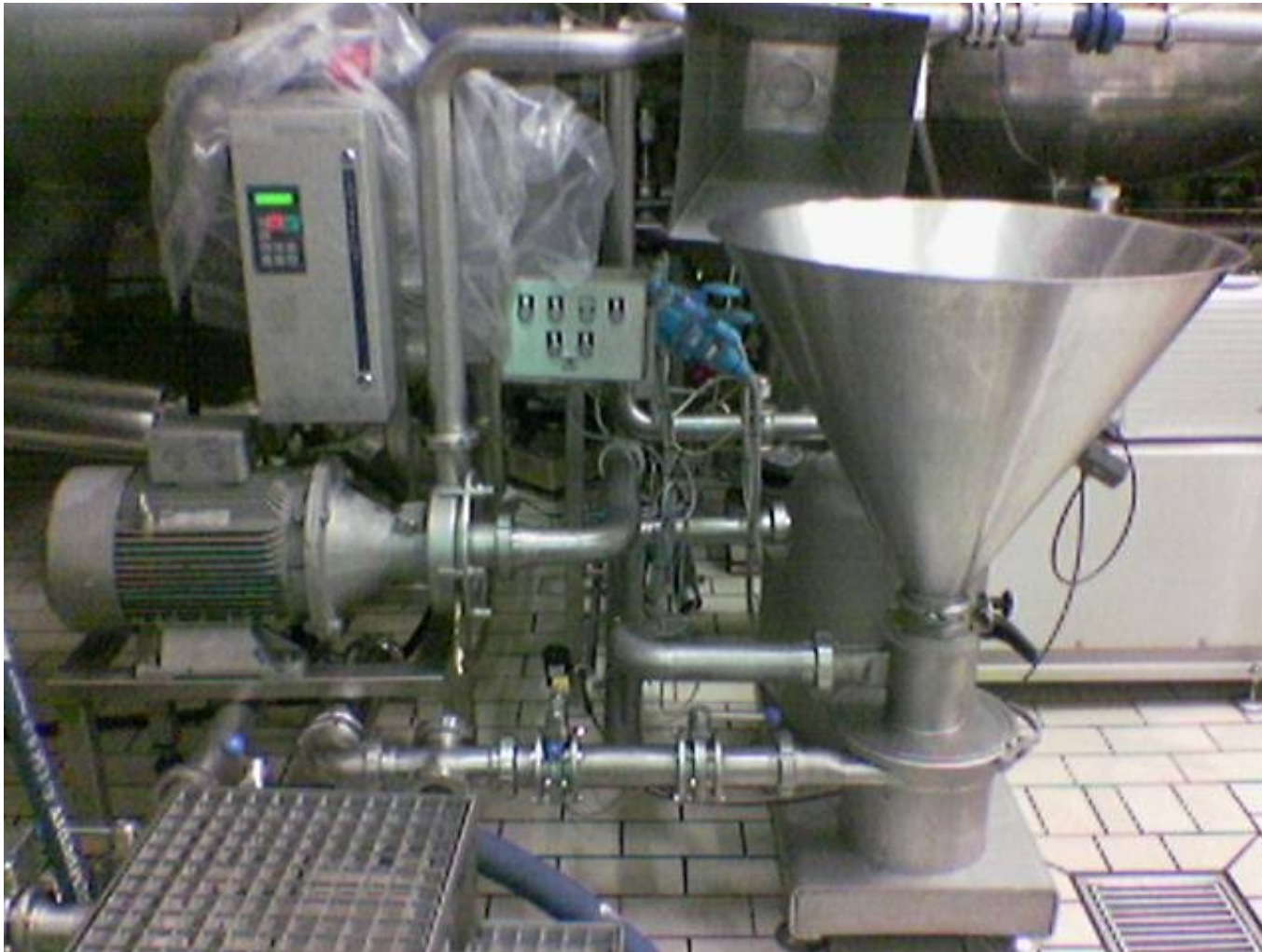


Compared to the competitors APV and Silverson



Any questions?

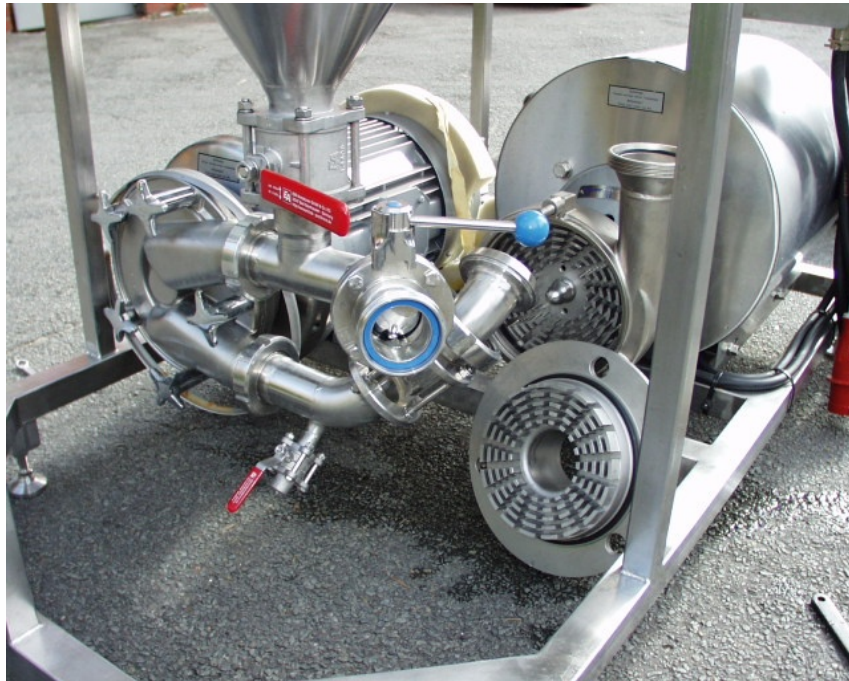
Because of not properly mixed solution customers also add our shear pump to existing APV TPM units



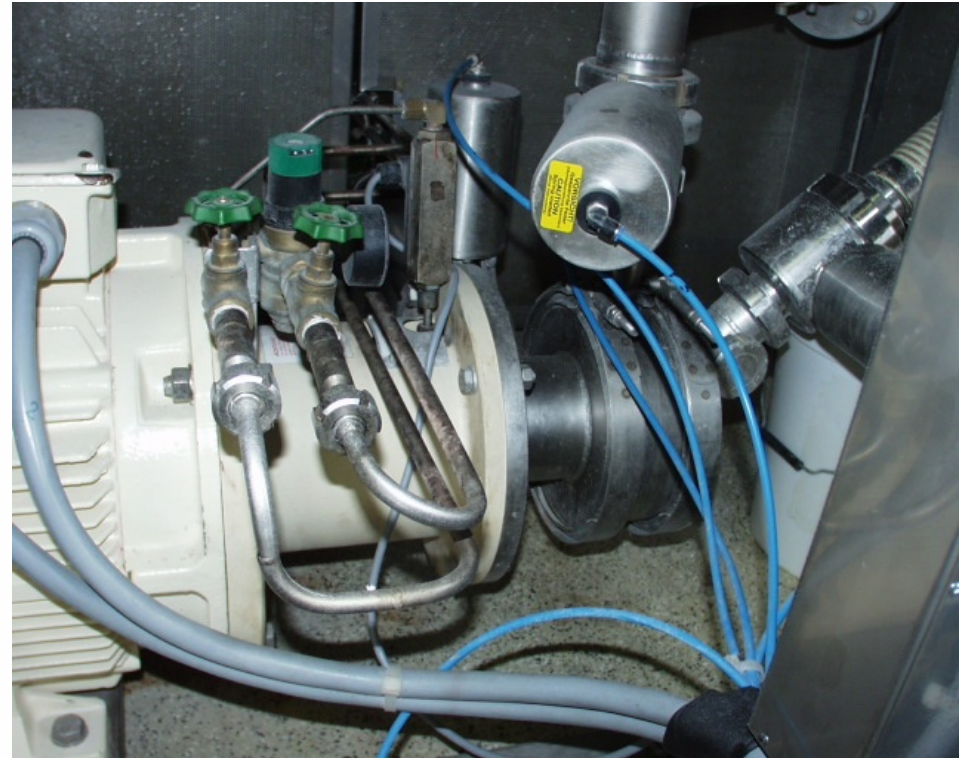
In the same way as in our standard centrifugal pumps, there is just the mechanical seal as a wear part.

All mechanical seal options are available, 95 years of experience, therefore less problems with mechanical seals guaranteed.

Easier maintenance as for example IKA



Easier systemintegration as for
example Ystral
More or less „plug and play“

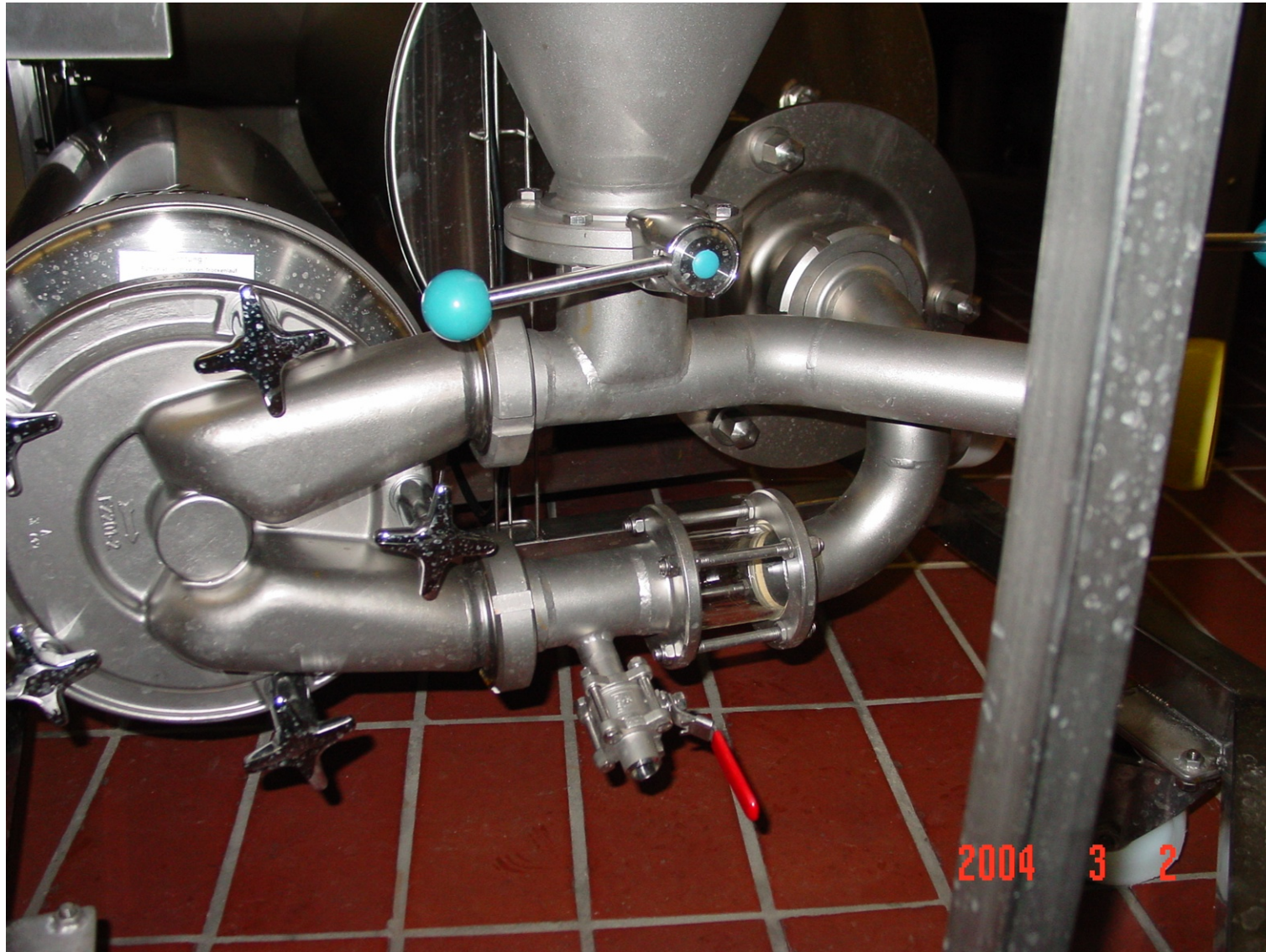


Stronger design as for example Inoxpa



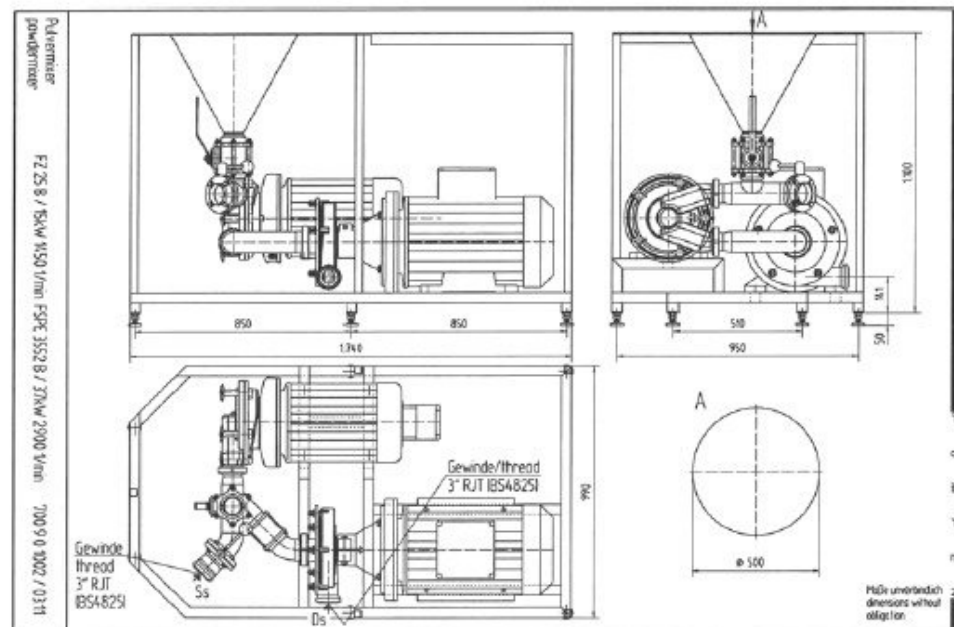
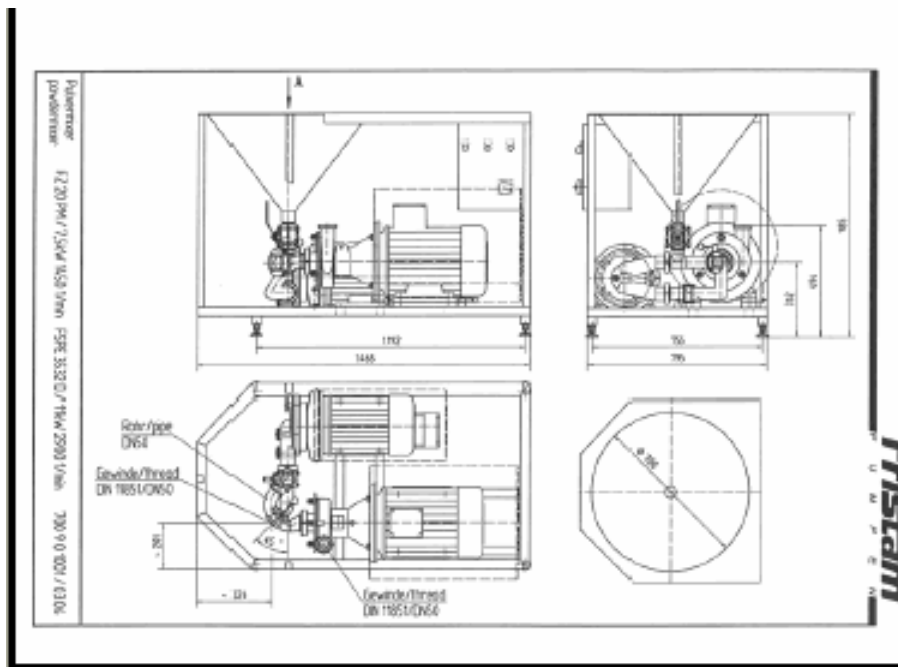
SOLIDS WITH LIQUIDS BLENDER

Why the Fristam FZ pump?



The FZ pump is a strong self - priming side channel pump. On one hand it gives the necessary pressure to pump through the shear pump back to the tank, on the other hand it can exactly suck in the required amount of powders. Reduced flow at pectin, full flow at sugar.

Exact matching sets with different sizes of self-priming pumps, shear pumps, pipings, valves and hoppers are available.



Fristam cares about the product and the workers in the plant:



Helpful table to place the bags,
other style as our competitors.



Happy customers can't believe the time saving with our powder mixer



Not just during production, also during CIP, because there isn't any undissolved powder sticking at the piping walls. This also saves powders and ensures always the same quality of your product.

Happy customers all over the world



Sometimes you can just feel the smile

Happy smiling, because of less hard work



Viscosity can be handled within the possibilities of the physics. Frozen Juices at minus 4°C can require up to 75 kW motors. Pectin solutions can go up to about 80.000 cp, and the powder mixer is still working.

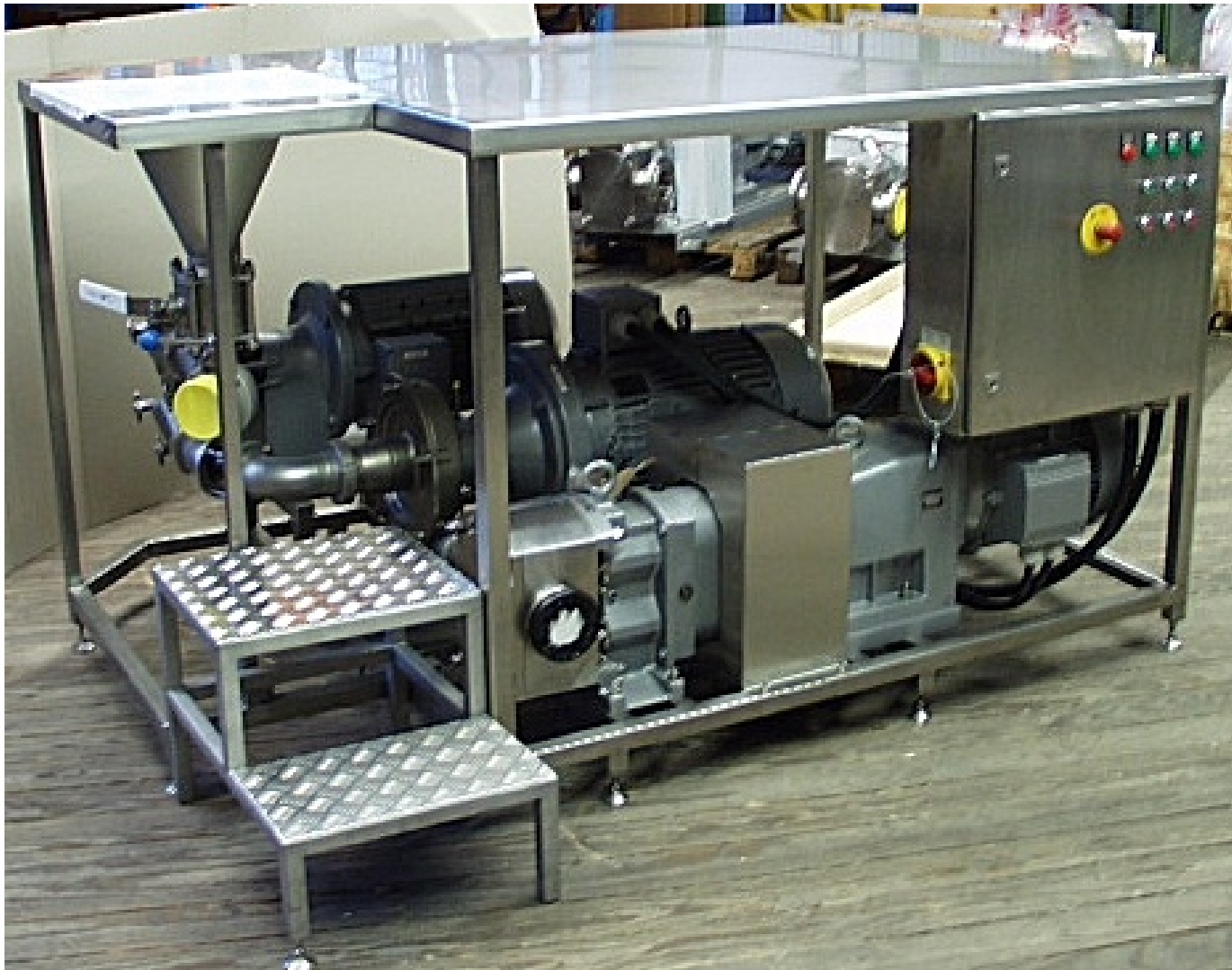
We just have to know about the max viscosity of the final product, to size the motors accordingly.



As we are working mainly in sanitary applications, we even have a CIP System for our powder mixer!



For special requirements there are special executions.



Advantage Fristam